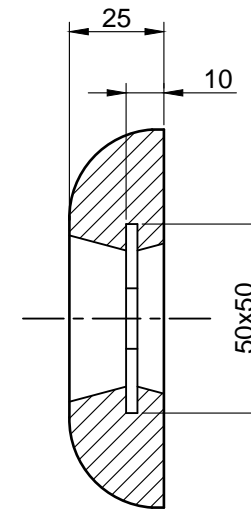
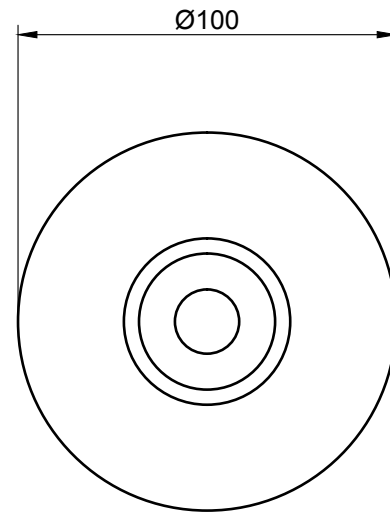


A

B

C




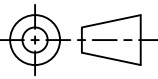
Magnesium alloy specification

Components	Impurities	Percentage (%)
Zinc		2.5 - 3.5
Manganese		0.01 - 0.05
Magnesium		Remainder
	Silicon	0.30 max
	Aluminium	0.25 max
	Copper	0.08 max
	Lead	0.030 max
	Tin	0.010 max
	Ferrous	0.005 max
	Nickel	0.003 max

Electrical capacity: 1230 AHr / Kg nominal
Solution potential: -1500 mV vs. Cu/CuSO₄ reference cell nominal (in seawater)

Note: All dimensions and weights are nominal. Dimensions in mm
 All data is subject to change without prior notice
 Anode is fitted with holes for suitable for M10 studs and nuts
 Anode can also be provided with backing sheet or backside coated

Nett Weight: 0.24 Kg
 Gross Weight: 0.34 Kg

Date:			Cathodic Protection Division Rietdekkerstraat 16 P.O. Box 4222 2980 GE Ridderkerk Netherlands Tel: +31 (0)180 48 28 28 E-mail: sales@mme.nl www.mme-group.com		Projection: 
			Order number:		Magnesium Alloy Bolted Hull Anode MME 4MB
Description:	Drawn: PdG	Date: 22-02-16	Project:		Sheet 1/1
	Checked: JdR	Date: 22-02-16	Dwg: MME 4MB		
Rev.	Approved: PJM	Date: 22-02-16	Copyright MME. No part of this drawing may be copied, disclosed, or made public, in any form, without prior written consent of Materiaal Metingen Europe.		

A

B

C

MME 12B