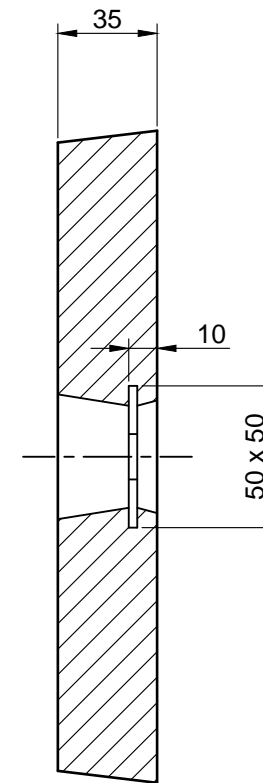
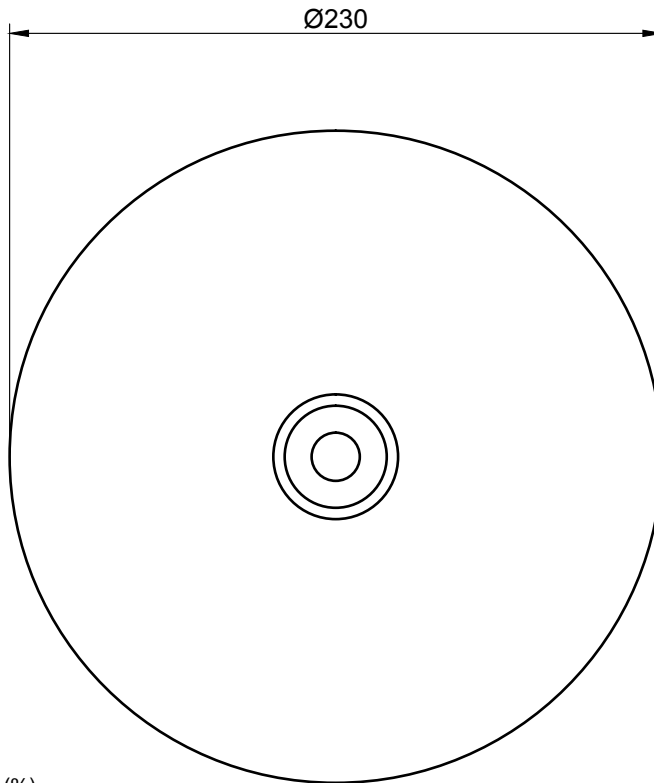


A

B

C



Aluminium alloy specification

Components	Impurities	Percentage (%)
Silicon		0.05 - 0.20
Zinc		3.50 - 5.00
Titanium		0.01 - 0.05
Bismuth		0.05 - 0.15
Indium		0.02 - 0.05
Aluminium		Remainder
	Copper	0.01 max
	Iron	0.15 max
	Others each	0.02 max
	Others total	0.05 max

Electrochemical capacity: 2700 AHr / Kg nominal

Solution potential: -1100 mV vs. Ag / AgCl reference cell nominal (in seawater)

Other specifications are available on request.

Note: All dimensions and weights are nominal. Dimensions in mm


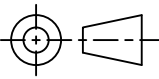
All data is subject to change without prior notice

Anode is fitted with holes suitable for M16 studs and nuts

Anode can also be provided with backing sheet or backside coated

Nett Weight: 3.7 Kg

Gross Weight: 3.8 Kg

Date:			Cathodic Protection Division Rietdekkerstraat 16 P.O. Box 4222 2980 GE Ridderkerk Netherlands Tel: +31 (0)180 48 28 28 E-mail: sales@mme.nl www.mme-group.com	Projection: 
	Order number:		Aluminium Alloy Bolted Hull Anode MME 37AB	
Description:	Drawn: PdG	Date: 31-07-13	Project:	Sheet 1/1
	Checked: JdR	Date: 31-07-13	Dwg: MME 37ABD	
Rev.	Approved: PM	Date: 31-07-13	Copyright MME. No part of this drawing may be copied, disclosed, or made public, in any form, without prior written consent of Materiaal Metingen Europe.	

A

B

C