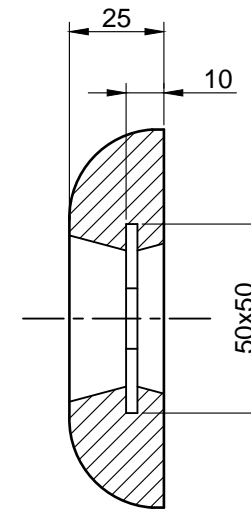
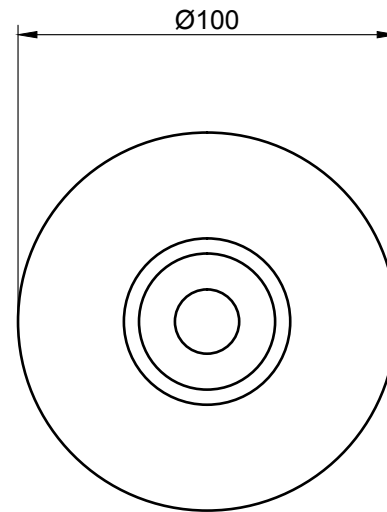


A

B

C



### Zinc alloy specifications acc. US Mil. Spec-A-18001K

Components	Impurities	Percentage (%)
Cadmium		0.025 - 0.07
Aluminium		0.10 - 0.5
Zinc		Remainder
	Copper	0.005 max
	Iron	0.005 max
	Lead	0.006 max
	Others total	0.10 max

Electrochemical capacity: 780 AHr/Kg nominal


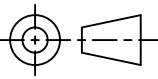
Solution potential: -1050mV vs. Ag/AgCl reference cell nominal (in seawater)

Other specifications are available on request.

Note: All dimensions and weights are nominal. Dimensions in mm  
 All data is subject to change without prior notice  
 Anode is fitted with holes for suitable for M10 studs and nuts  
 Anode can also be provided with backing sheet or backside coated

Nett Weight: 1.0 Kg

Gross Weight: 1.1 Kg

Date:			<b>Cathodic Protection Division</b> Rietdekkerstraat 16 P.O. Box 4222 2980 GE Ridderkerk Netherlands Tel: +31 (0)180 48 28 28 E-mail: sales@mme.nl www.mme-group.com	Projection: 
	Scale: 1:2			
Description:	Order number:	<b>Zinc Alloy Bolted Hull Anode</b> <b>MME 1ZB</b>		
	Drawn: PdG	Date: 31-07-13	Project:	Sheet 1/1
	Checked: JdR	Date: 31-07-13	Dwg: MME 1ZBD	
Rev.	Approved: PM	Date: 31-07-13	Copyright MME. No part of this drawing may be copied, disclosed, or made public, in any form, without prior written consent of Materiaal Metingen Europe.	

A

B

C