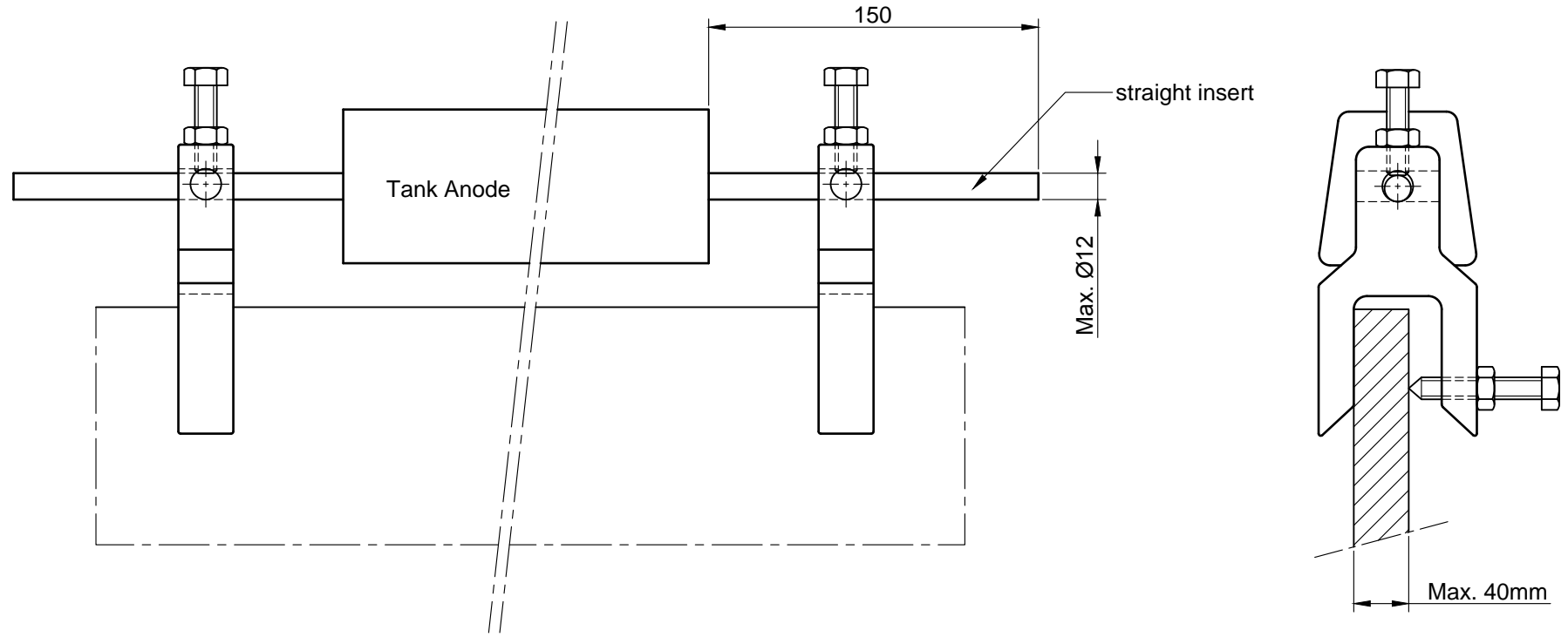

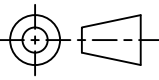


Tank anode arrangement with M-clamps



All our tank anodes are also available with straight inserts for this type of installation!

Note: All dimensions and weights are nominal. Dimensions in mm  
 For installing tank anodes without welding  
 Two m-clamps per installed tank anode required

Date:			<b>Cathodic Protection Division</b> Rietdekkerstraat 16 P.O. Box 4222 2980 GE Ridderkerk Netherlands Tel: +31 (0)180 48 28 28 E-mail: sales@mme.nl www.mme-group.com		Projection:  Scale: 1:3
			Order number:	<b>"M" - Clamp Installation</b> Tank Anode With Straight Insert	
Description:	Drawn: PdG	Date: 31-07-13	Project:		Sheet 1/1
	Checked: JdR	Date: 31-07-13	Dwg: M - Clamp Installation		
Rev.	Approved: PM	Date: 31-07-13	Copyright MME. No part of this drawing may be copied, disclosed, or made public, in any form, without prior written consent of Materiaal Metingen Europe.		